

Peabody Engineering  
 1700 Alhambra Blvd., Suite 102  
 Sacramento, CA 95816  
 (916) 731-9000 office (916) 731-9008 fax



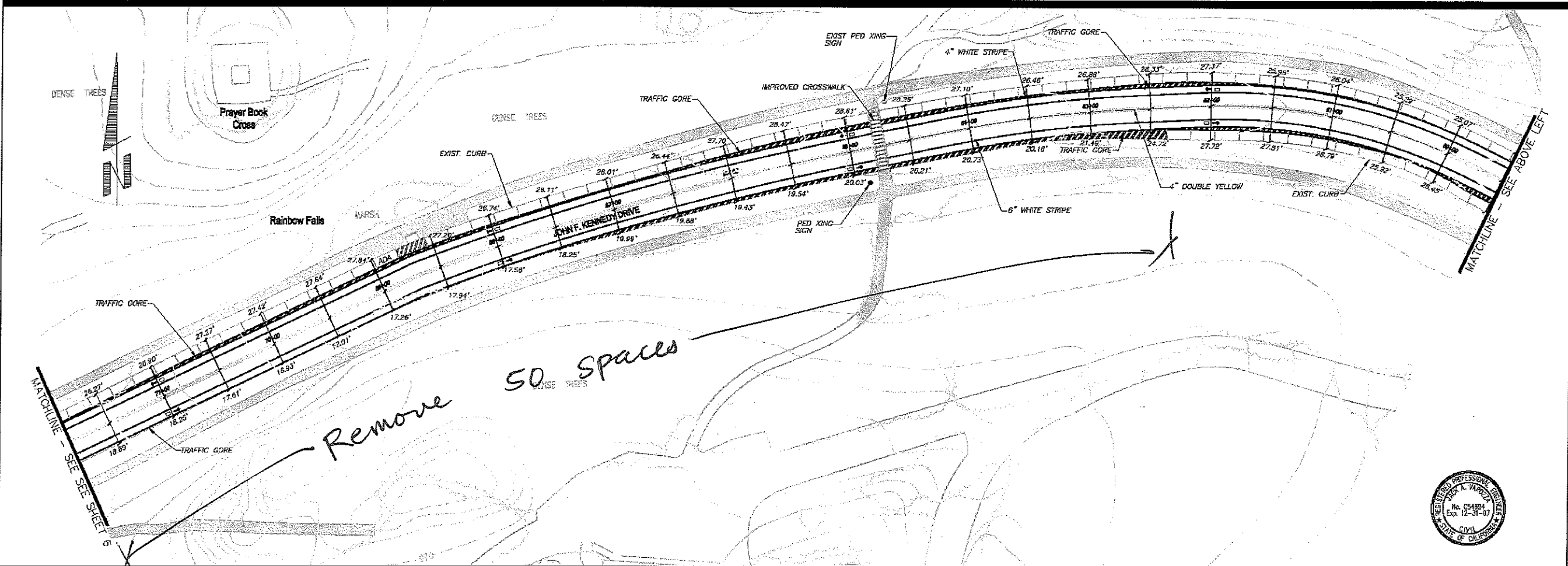
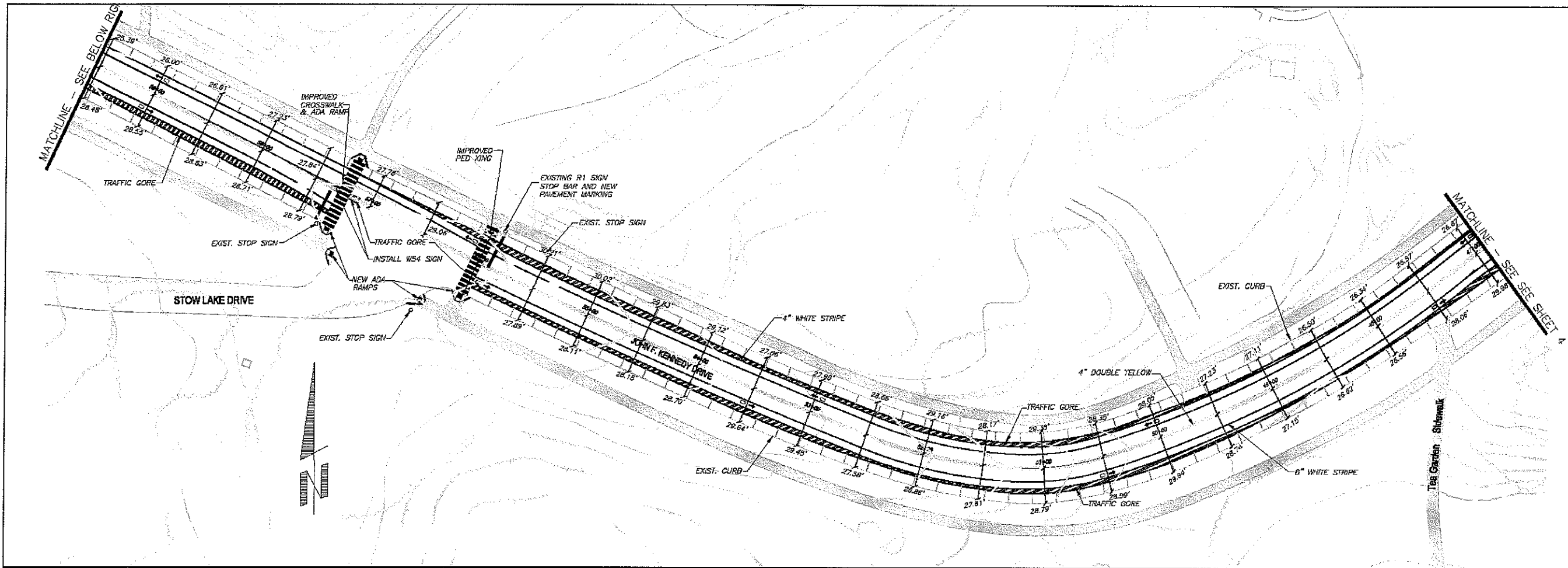
No.	Description	Eng. Init.	By	Date

JFK BICYCLE & PEDESTRIAN  
 IMPROVEMENTS  
 GOLDEN GATE PARK  
 CONCOURSE AUTHORITY

JFK DRIVE  
 23+50-47+00

DRAWN BY:	JAV
DESIGNED BY:	JAV
CHECKED BY:	JAV
HORIZONTAL:	1"=40'
VERTICAL:	NONE
DATE:	06/07/06
SHEET NO.:	4 OF 6
JCB NO.:	0706.001





Peabody Engineering  
 1700 Alhambra Blvd, Suite 102  
 Sacramento, CA 95816  
 (916) 731-9099 office (916) 731-9098 fax



CITY APPROVAL	
By	Date

JFK BICYCLE & PEDESTRIAN  
 IMPROVEMENTS  
 GOLDEN GATE PARK  
 CONCOURSE AUTHORITY

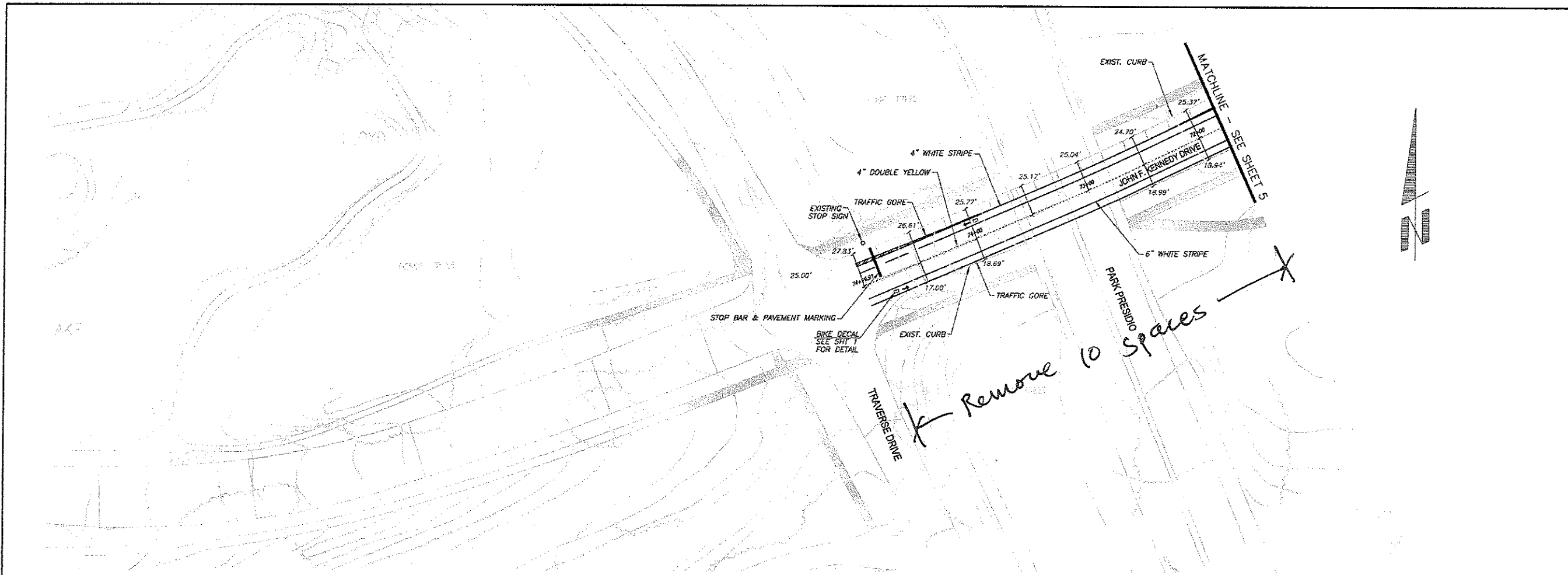
JFK DRIVE  
 47+00-71+75

DRAWN BY:	JAV
DESIGNED BY:	JAV
CHECKED BY:	JAV

HORIZONTAL:	1"=40'
VERTICAL:	NONE
DATE:	05/08/06
SHEET NO.:	5 OF 6

JOB NO.: 0706.001





*Remove 10 spaces*

JFK width (curb to curb) varies. Parking removal at specific sections are necessary to include stripe continuous bike lanes on both sides of the street from Kezar to Transverse Dr. A total of ~160 parking spaces will be removed as suggested by these striping drawings. Bike lanes can be striped 6-foot wide and travel lanes can vary between 10' and 12-foot wide.



Peabody Engineering  
1700 Alhambra Blvd., Suite 102  
Sacramento, CA 95816  
(916) 731-8088 office (916) 731-8089 fax



No.	Description	Exp. Init.	By	Date

JFK BICYCLE & PEDESTRIAN IMPROVEMENTS  
GOLDEN GATE PARK CONCOURSE AUTHORITY

JFK DRIVE  
71+75-END

DRAWN BY: JAV
DESIGNED BY: JAV
CHECKED BY: JAV
HORIZONTAL: 1" = 40'
VERTICAL: NONE
DATE: 06/06/06
SHEET NO. 6 OF 6
JOB NO.: 0706.001