

NO.	DATE	DESCRIPTION	BY	APP.
TABLE OF REVISIONS				
CHECK WITH TRACING TO SEE IF YOU HAVE LATEST REVISION				

REFERENCE INFORMATION & FILE NO. OF SURVEYS
 SUPERCEDES STR-4064.2
 REV "A"



DEPARTMENT OF PARKING AND TRAFFIC
 DIVISION OF TRAFFIC ENGINEERING
 CITY AND COUNTY OF SAN FRANCISCO

DESIGNED: DATE:	APPROVED	SCALE:
RJ 12/04	<i>[Signature]</i>	1"=50'
DRAWN: DATE:	SECTION ENGINEER DATE:	SHEET OF SHEETS
TA 12/04		2 OF 5
CHECKED: DATE:	<i>[Signature]</i>	
RO 12/04	DEP. DIRECTOR AND CITY TRAFFIC ENGINEER	

TRAFFIC STRIPING
 JOHN F. KENNEDY DRIVE
 STOW LAKE DRIVE TO 10TH AVENUE

CONTRACT NO.
DRAWING NO. STR-7662.1
FILE NO.
REV. NO. 0

EXTERNAL REFERENCES: POINTS USED:
 SCALE FACTOR: PLOT SCALE:
 FILE NAME: L:\off\eng\str\7662\7662.dwg
 OPERATIONS DATE:

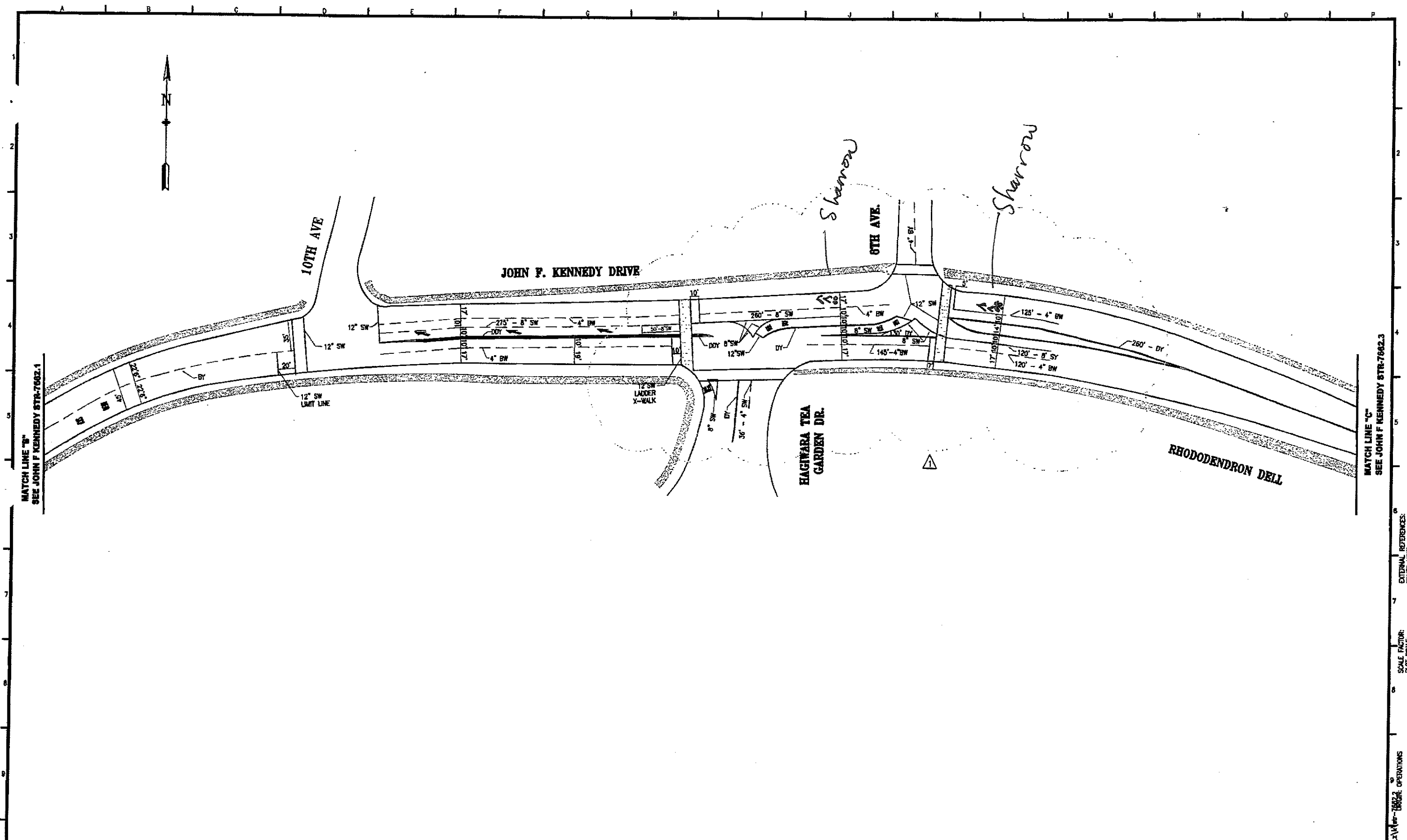


TABLE OF REVISIONS		CHECK WITH TRACING TO SEE IF YOU HAVE LATEST REVISION	
NO.	DATE	DESCRIPTION	BY / APP.
1	01/13/05	PAINTED LADDER X-WALK & LIMIT LINE @ 8TH AVE.	SF/PL / MY

REFERENCE INFORMATION & FILE NO. OF SURVEYS

SUPERCEDES
STR-4064.1 REV "D"
STR-8297 REV "1"
SIA-2382.1
REV 7



DEPARTMENT OF PARKING AND TRAFFIC
DIVISION OF TRAFFIC ENGINEERING
CITY AND COUNTY OF SAN FRANCISCO

DESIGNED: RJ 12/04
DRAWN: FA 12/04
CHECKED: RJ 12/04

APPROVED: DANIEL ARELLANO 2005
SECTION ENGINEER
DATE: 12/04

JACK L. FLECK 2005
REP. DIRECTOR AND
CITY TRAFFIC ENGINEER
DATE: 12/04

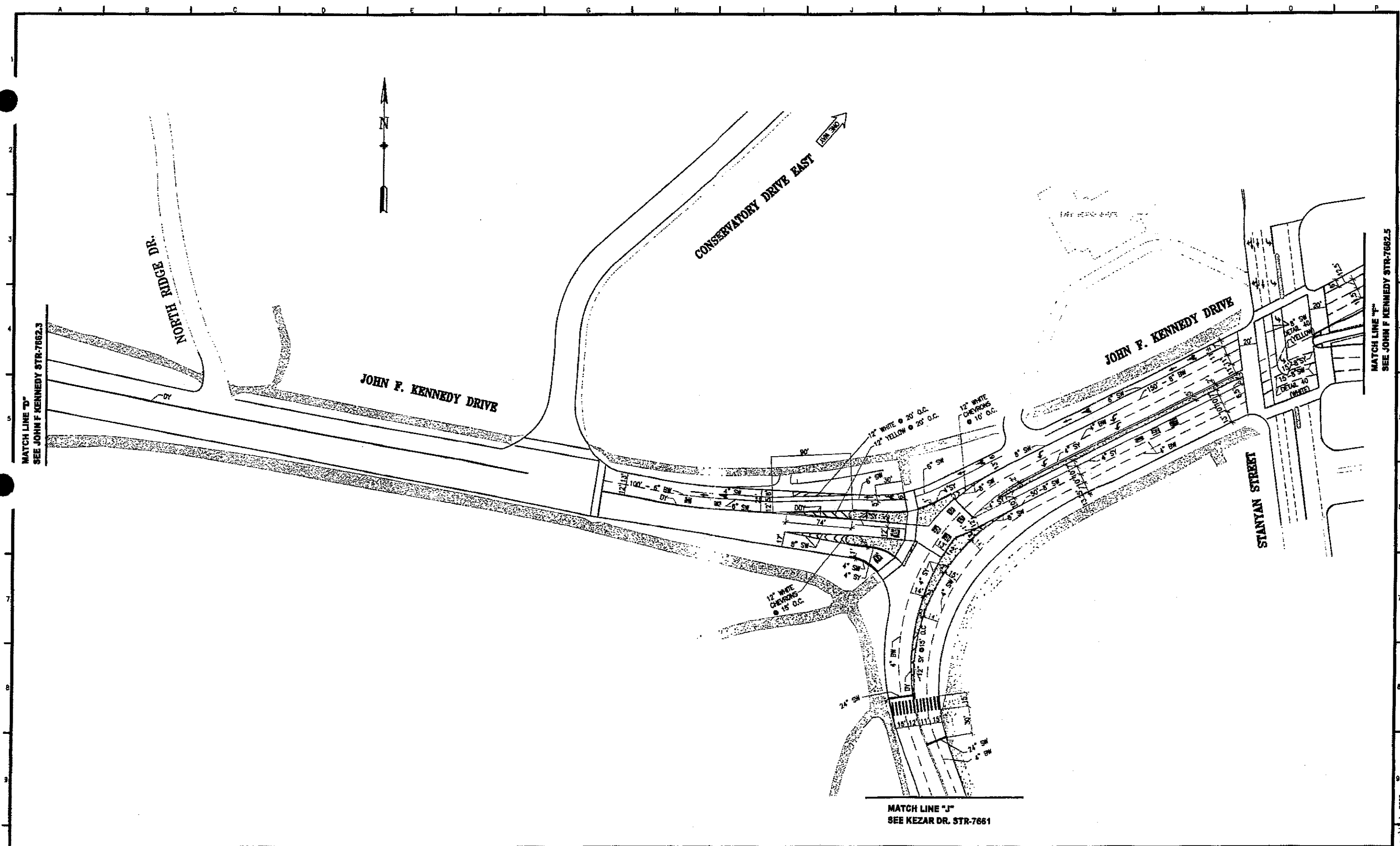
SCALE: 1"=50'
SHEET OF SHEETS: 3 OF 5

TRAFFIC STRIPING

JOHN F. KENNEDY DRIVE
10TH AVENUE TO 8TH AVENUE

CONTRACT NO. STR-7662.2
FILE NO.
REV. NO. 1

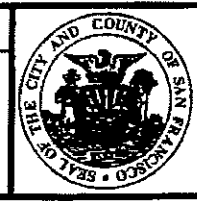
EXTERNAL REFERENCES:
FONTS USED:
SCALE FACTOR:
PLOT SCALE:
FILE NAME: L:\proj_mcs\dept\ca-11\proj-7662.2\ORIG.DWG OPERATIONS
DATE:



NO.	DATE	DESCRIPTION	BY	APP.
01/02		REBUILD AND RESTRIPE INTERSECTION ON 5/03	MS	JR

TABLE OF REVISIONS
CHECK WITH TRACING TO SEE IF YOU HAVE LATEST REVISION

REFERENCE INFORMATION & FILE NO. OF SURVEYS
SUPERCEDES STR-4064 REV "B"



DEPARTMENT OF PARKING AND TRAFFIC
DIVISION OF TRAFFIC ENGINEERING
CITY AND COUNTY OF SAN FRANCISCO

DESIGNED: DATE: MS 12/04
DRAWN: DATE: TA/AW 12/02
CHECKED: DATE: RJ/RO 12/04

APPROVED: [Signature]
SECTION ENGINEER
DATE: [Signature]
DEP. DIRECTOR AND CITY TRAFFIC ENGINEER

SCALE: 1"=50'
SHEET OF SHEETS: 5 OF 5

TRAFFIC STRIPING
JOHN F. KENNEDY DRIVE
BOWLING GREEN DRIVE TO STANYAN STREET

CONTRACT NO.
DRAWING NO. STR-7662.4
FILE NO.
REV. NO. 0

EXTERNAL REFERENCES:
SCALE FACTOR:
PLOT SCALE:
ORIGIN: OPERATIONS
DATE: